



### For wheelchairs, bicycles and goods deliveries

MPG swing gates are the optimum solution for outdoor barriers when a large passage opening is necessary. It can be free-standing or used in combination with a MPT turnstile. The swing gate has an opening angle of 90° in both directions and can be controlled by all conventional access control systems. As an option, the swing gate can be expanded with a single- or double-sided induction loop that reliably detects the presence of bicycles and wheelchairs.

The swing gate is energy-efficient, maintenance-free and quiet thanks to its MHTM™ drive technology. Low impact forces and sensitive contact detection ensure user safety and compliance with strict European standards. With a variety of material options, interlocks and supplementary attachments, MPG swing gates can be individually adapted to the desired purpose.



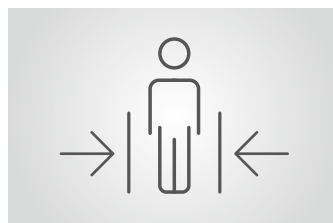
### For wheelchairs, bicycles and baggage

MPG swing gates are the optimum solution when large opening widths are necessary. A wide variety of options are available for access control.



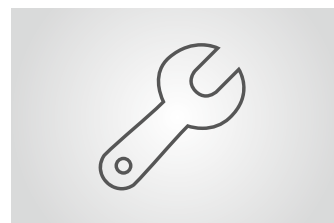
### Innovative drive technology

The MHTM™ drive unit is maintenance-free, energy-efficient, and has an exceptional soft-start action.



### Maximum safety

Low impact forces and sensitive contact detection offer optimum protection for persons and their means of locomotion.



### Easy access to components

All the components necessary for operation are accommodated in the main beams, considerably simplifying assembly, commissioning and maintenance.

# MPG

## Wheelchair-Accessible Swing Gate

- > Controlled access for cyclists and wheelchair users
- > Sensitive impact detection for maximum safety
- > Induction loop detector for detection of bicycles and wheelchairs (optional)
- > Low power consumption thanks to maintenance-free MHTM™ drive
- > Designed for 10 million opening and closing cycles

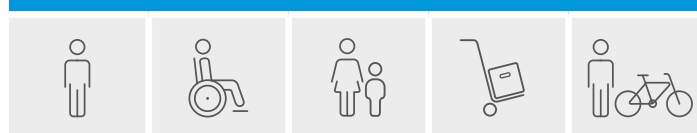


Technical data	MPG 162	MPG 172
Installation	in combination with turnstile system	free-standing
Drive technology	MHTM™	MHTM™
Voltage	110 – 240 VAC, 50/60 Hz	110 – 240 VAC, 50/60 Hz
Power consumption	85 W (incl. interlock)	85 W (incl. interlock)
Duty cycle	100 %	100 %
Opening/closing times	approx. 3 s	approx. 3 s
Passage width	1087 mm	1070 mm
Enclosure rating	IP 43	IP 43
Dimensions (L x W x H)	1451 x 500 (excl. guide bar) x 2235 mm	1623 x 500 (excl. guide bar) x 2235 mm
Weight	approx. 220 kg	approx. 250 kg
Temperature range	-25 to +50°C	-25 to +50°C

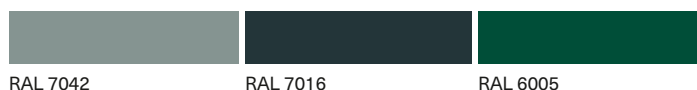
### Options

Material	Galvanized steel, powder-coated steel in standard colors, powder-coated steel in special colors, stainless steel 1.4571
Sensors	Single-sided/double-sided induction loop to detect wheelchairs and bicycles
Reaction to power failure	Free access or auto-locking on power failure
Attachments	Illumination, base frame, base mounting set, roof, extension column, gate end display (GED)

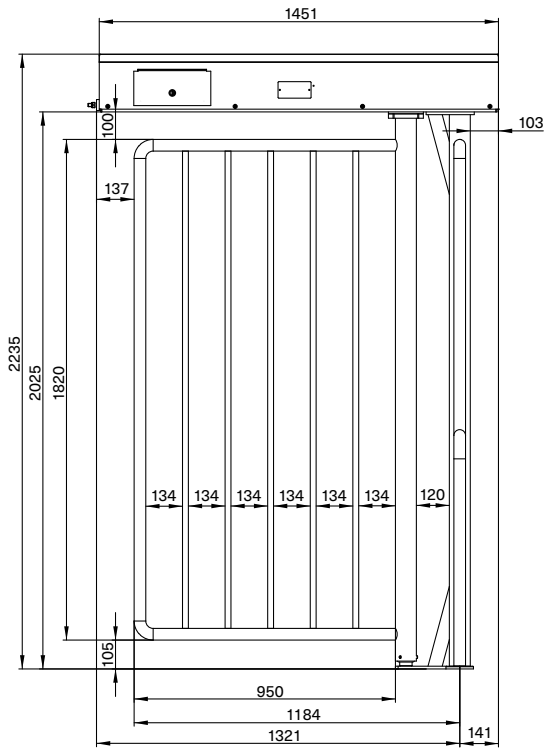
### Potential applications



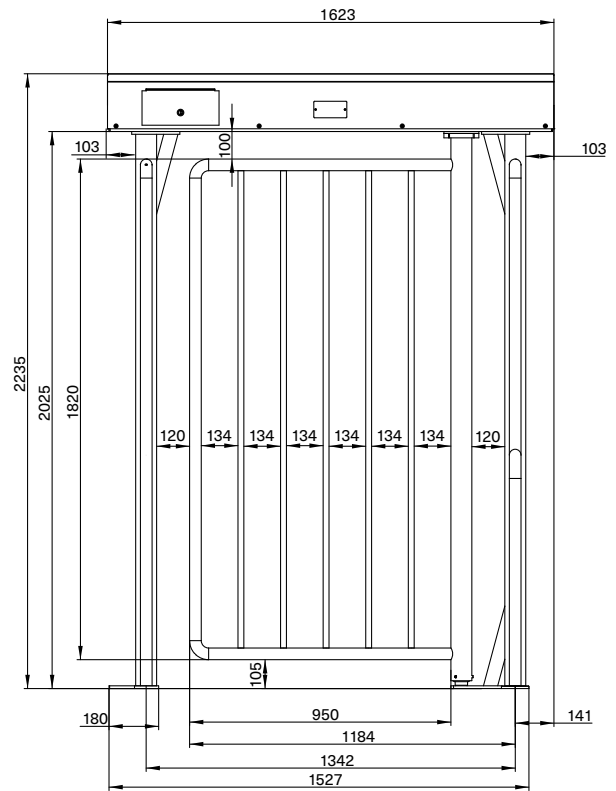
### Standard colors



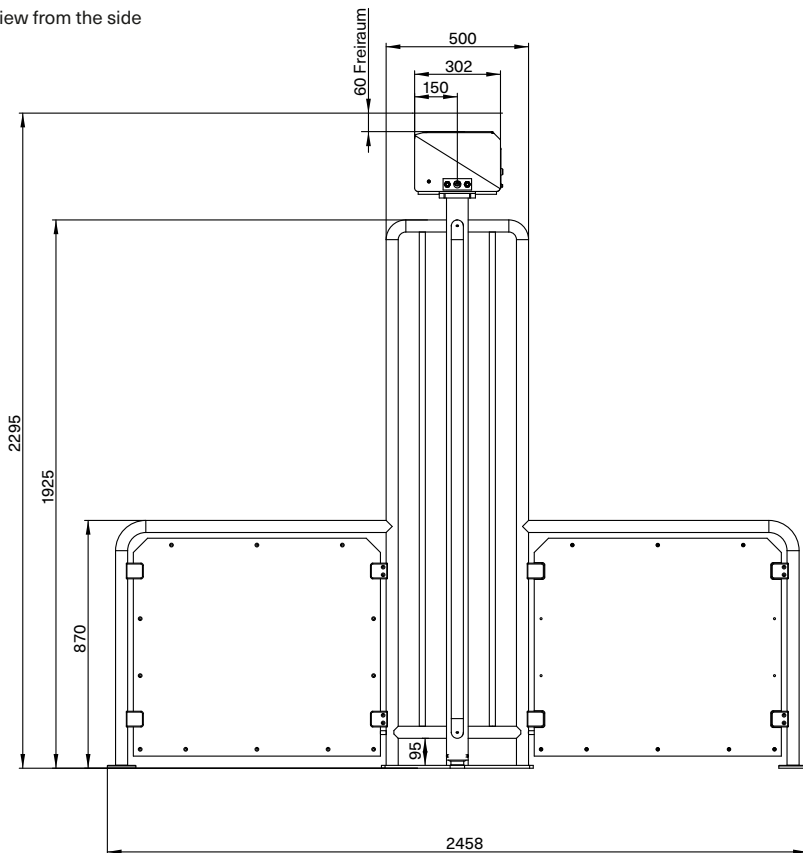
MPG 162  
View from inside



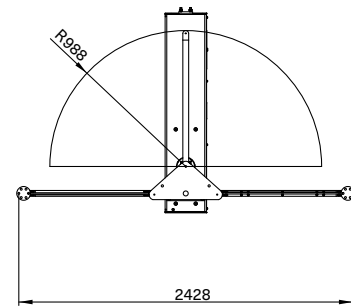
MPG 172  
View from inside



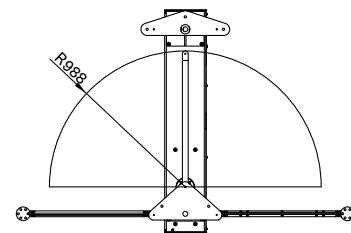
MPG 162 und MPG 172  
View from the side



MPG 162  
View from below



MPG 172  
View from below



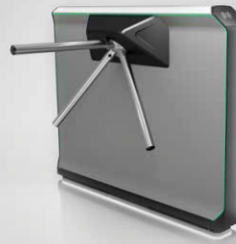
# Access to Progress

Magnetic stands for pioneering products – in every way. Our access control systems for vehicles or pedestrians clear the way for thousands of people every day – at car parks, toll gates, stations, airports and in buildings. Our technology is also pioneering, however: with innovative drives, intelligent control systems and well thought-out details it provides maximum safety and longevity. Are you also on the path to Magnetic?



## Vehicle barriers

Access barriers  
Parking barriers  
Toll barriers  
Special barriers



## Pedestrian gates

Turnstiles  
Swing gates  
Tripod gates  
Retractable gates  
Wing gates



## Terminals

Cars  
Trucks

*Germany*  
**MAGNETIC AUTOCONTROL GMBH**  
Grienmatt 20  
79650 Schopfheim  
Phone +49 7622 695-5  
Fax +49 7622 695-800  
E-mail [info@magnetic-germany.com](mailto:info@magnetic-germany.com)

*Australia*  
**MAGNETIC AUTOMATION PTY LTD**  
38 Metrolink Circuit  
Campbellfield, VIC 3061  
Phone +61 3 9339 2900  
E-mail [info@magnetic-oz.com](mailto:info@magnetic-oz.com)

*Austria*  
**FAAC GMBH**  
Münchner Bundesstraße 123  
5020 Salzburg  
Phone +43 662 853395-0  
E-mail [at.info@faacgroup.com](mailto:at.info@faacgroup.com)

*Benelux countries*  
**FAAC BENELUX NV/SA**  
Industriezone 3B  
8490 Jabbeke  
Belgium  
Phone +32 50 320202  
E-mail [info@magnetic-benelux.com](mailto:info@magnetic-benelux.com)

*Brazil*  
**MAGNETIC AUTOCONTROL LTDA**  
Av. Salim Antônio Curiati, 136  
04690-050 – São Paulo  
Phone +55 11 5660 8500  
E-mail [info@magnetic-br.com](mailto:info@magnetic-br.com)

*China*  
**MAGNETIC CONTROL SYSTEMS CO., LTD**  
No. 3 Building, No. 51  
Lane 1159, Kang Qiao (East) Road  
Kang Qiao Industrial Zone, Shanghai  
Phone +86 21 68182970  
E-mail [info@magnetic-cn.com](mailto:info@magnetic-cn.com)

*France*  
**FAAC FRANCE**  
377 Rue Ferdinand Perrier  
69808 St Priest Cedex  
Phone +33 4 72 21 86 89  
E-mail [info@magnetic-fr.com](mailto:info@magnetic-fr.com)

*India*  
**MAGNETIC AUTOCONTROL PVT LTD.**  
PRS Centre  
Plot No. 373 to 376, 2nd Floor (West Wing)  
1st Cross Street, Nehru Nagar  
Old Mahabalipuram Road  
Kottivakkam (Opp Rayala Technopark, Perungudi)  
Chennai 600041  
Phone +91 44 421 23297  
E-mail [info@magnetic-india.com](mailto:info@magnetic-india.com)

*Middle East*  
**FAAC MIDDLE EAST FZE**  
Dubai Silicon Oasis  
PO Box 54886  
Dubai  
United Arab Emirates  
Phone +971 4 3724193  
E-mail [info@magnetic-uae.com](mailto:info@magnetic-uae.com)

*N. and S. America (excl. Brazil)*  
**FAAC INTERNATIONAL, INC**  
3160 Murell Road  
Rockledge, FL 32955  
USA  
Phone +1 321 635 8585  
E-mail [info@magnetic-usa.com](mailto:info@magnetic-usa.com)

*Scandinavia*  
**FAAC NORDIC AB**  
Box 125  
284 22 Perstorp  
Sweden  
Phone +46 435 77 95 03  
E-mail [info@magnetic-nordic.com](mailto:info@magnetic-nordic.com)

*Southeast Asia*  
**MAGNETIC CONTROL SYSTEMS SDN. BHD**  
No. 17, Jalan Anggerik Mokara 31/54  
Taman Perindustrian Kota Kemuning  
40460 Shah Alam  
Selangor Darul Ehsan  
Malaysia  
Phone +60 3 5123 0033  
E-mail [info@magnetic-malaysia.com](mailto:info@magnetic-malaysia.com)